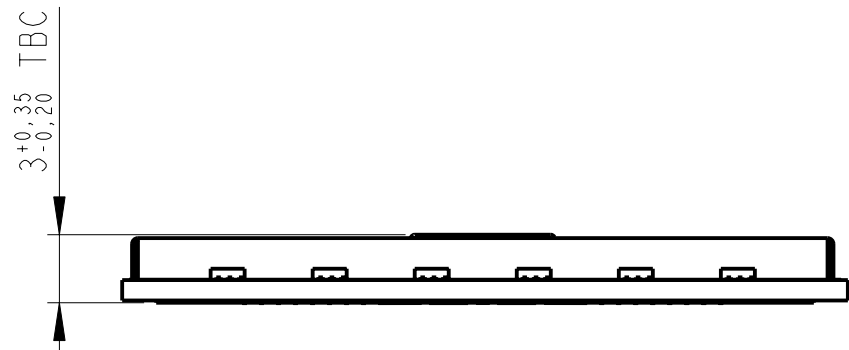
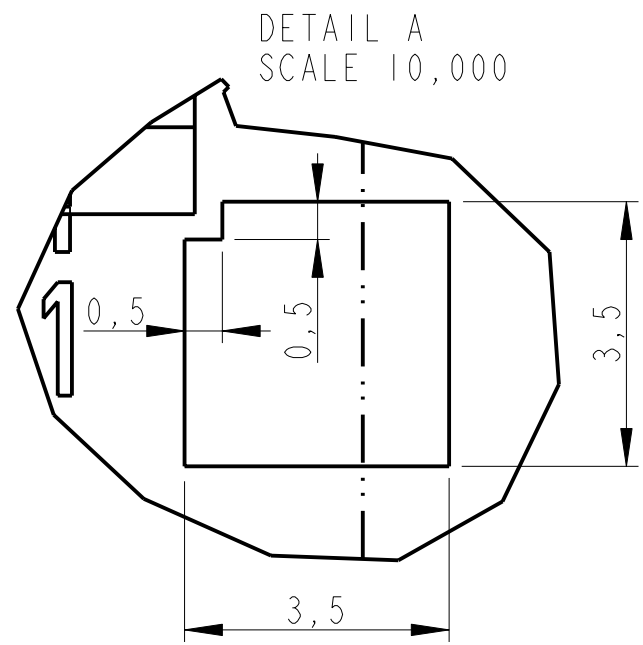
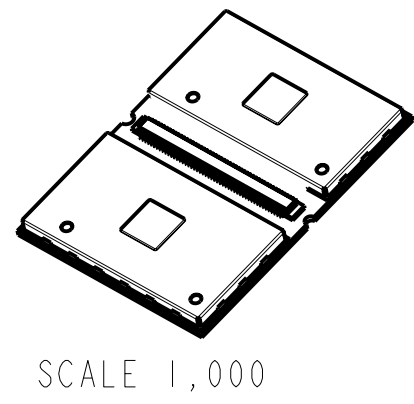
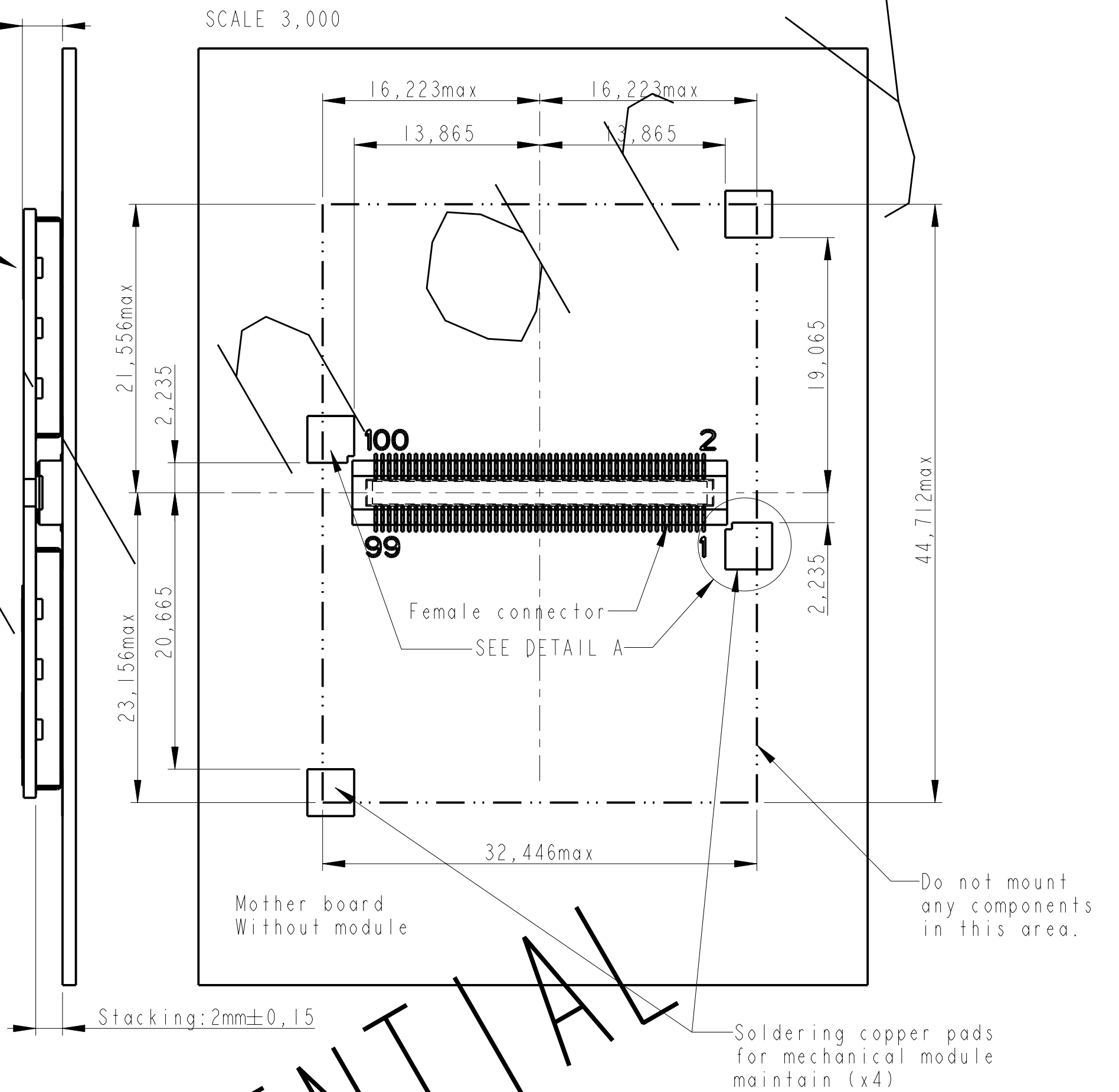
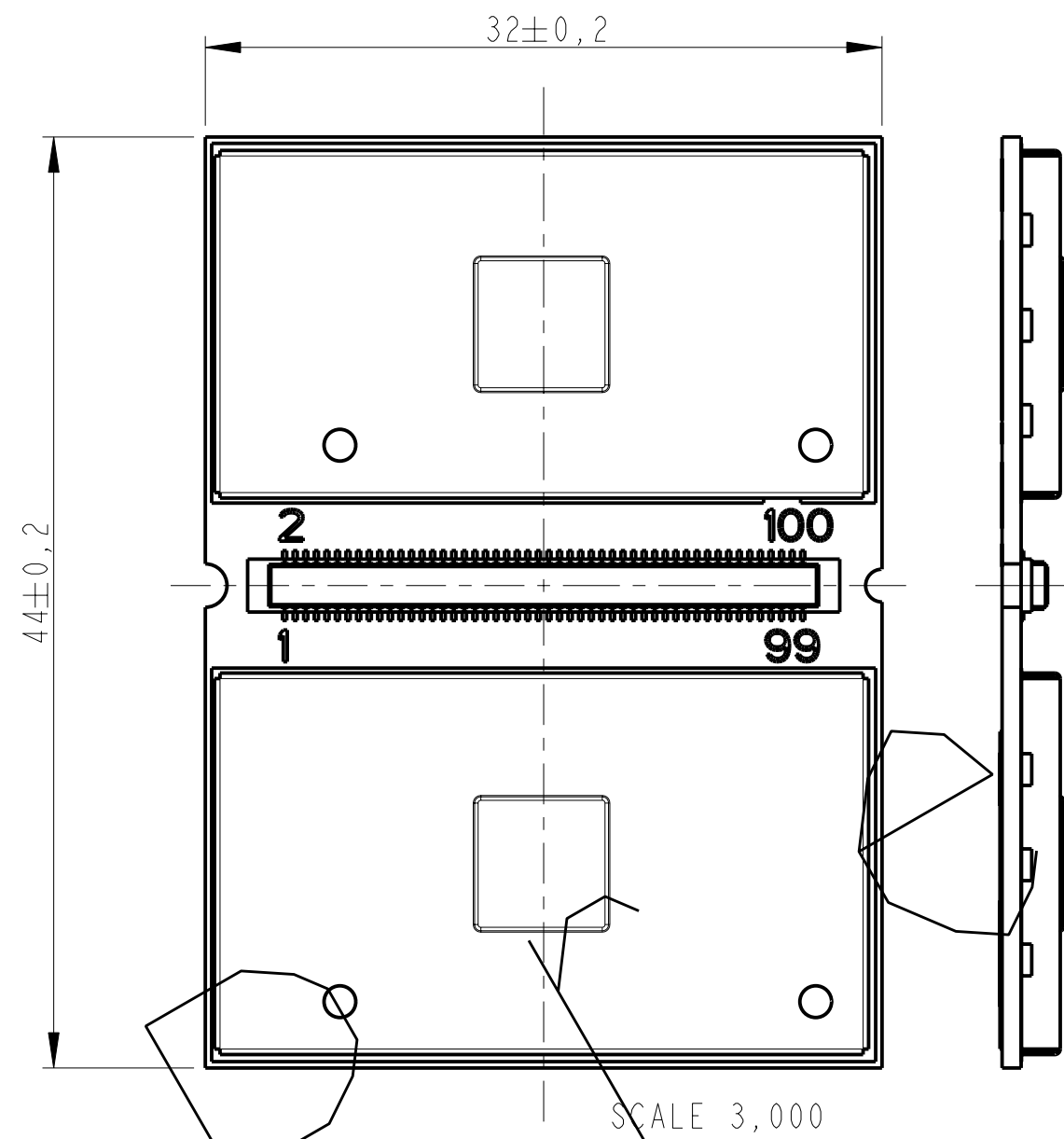


# MAXIMUM BULK OCCUPIED ON THE MOTHER BOARD



3\*0,45 TBC  
(with stacking tolerances)

Maximum zone generated by dimensional tolerances.  
Automatic positioning tolerances :  
angular : +/- 0,1°  
linear : +/- 0,1mm



CONFIDENTIAL

| MODIFICATION   | DATE     | AUTHOR | RESP. | STATUS      | IND |
|----------------|----------|--------|-------|-------------|-----|
| Modif. RF pad  | 02/05/03 | JPM    | HER   | Preliminary | 04  |
| Connector ref. | 27/03/03 | JPM    | JJO   | Preliminary | 03  |
| Modif. pads    | 17/03/03 | JPM    | JJO   | Preliminary | 02  |
| Creation       | 31/01/03 | JPM    | JJO   | Preliminary | 01  |

|                    |             |                   |             |
|--------------------|-------------|-------------------|-------------|
| Wismo Quik - Q3106 |             | TOL.GEN.: ±0,1    | SCALE : /   |
| MODULE DIMENSIONS  |             | FOLIO: 1/1        | FORMAT : A2 |
|                    |             | WM-2-2153-V-009-A |             |
| <b>wavecom®</b>    |             | AUTEUR : JPM      | 04          |
|                    |             | RESPONS : JJO     |             |
| PRO/ENGINEER       | WM2E-MODULE |                   | IND.        |