



GIVE WINGS TO  
YOUR IDEAS



GETTING STARTED  
WITH OPEN AT

Version 1.00  
October 2001

**wavecom**<sup>®</sup>

PLUG IN TO THE WIRELESS WORLD



# Getting Started with Open AT

Version: **001 / 1.0**  
Date: **October 30<sup>th</sup>, 2001**  
Reference: **WM\_CUS\_OAT\_CTI\_001**

(THIS PAGE IS INTENTIONALLY LEFT BLANK)

## TABLE OF CONTENTS

1	Introduction.....	5
1.1	About this document.....	5
1.2	Open AT SDK Documentation .....	5
2	Software installation .....	6
2.1	System Requirements .....	6
2.2	Hardware Requirements.....	6
2.3	Software Requirements .....	6
3	Installing the Open AT SDK .....	7
3.1	Setup options .....	9
3.2	Destination of the Program and Documentation Files .....	10
3.3	File copy and system update .....	10
3.4	Compiler.....	11
3.5	Wavecom Development Toolkit .....	12
4	Support .....	13
4.1	Contact Us .....	13
4.2	World Wide Web .....	13
5	Warranty.....	13

## LIST OF FIGURES

Figure 1 - Open AT startup screen .....	7
Figure 2 - Open AT setup .....	8
Figure 3 - Setup options.....	9
Figure 4 - Open AT Destination Folder .....	10
Figure 5 - Open AT SDK files copy.....	10
Figure 6 - "autoexec.bat" file update .....	11
Figure 7 - Insert the ARM Compiler Install CD.....	11
Figure 8 - Do not restart your computer .....	12

WAVECOM, WISMO are trademarks or registered trademarks of Wavecom S.A.  
All other company and/or product names mentioned may be trademarks or  
registered trademarks of their respective owners.

# 1 Introduction

## 1.1 About this document

This document describes how to quickly start with the Open AT Software Development ToolKit.

## 1.2 Open AT SDK Documentation

The following documents are included in the Open AT SDK:

Document	Description
<i>Open AT flyer ("Take command with Open AT")</i>	General description and features of Open AT.
<i>MUSE Platform brochure ("Give wings to your ideas")</i>	Marketing brochure describing the Wavecom Open Software Platforms (MUSE platform)
<i>Getting Started with Open AT</i>	Description of the first steps to use Open AT.
<i>Tutorial</i>	Tutorial for the development of Open AT applications.
<i>Development Guide</i>	Guide for the development of Open AT applications. This document includes the description of the Open AT APIs, the description of the operating modes and some examples of simple Open AT applications.
<i>Tools Manual</i>	Manual describing the tools available in the Open AT SDK.
<i>AT command Interface Guide</i>	Description of the AT commands supported in the Open AT firmware.
<i>Open AT release note</i>	Release note listing the Open AT design features as well as the new features.
<i>FAQ</i>	Frequently Asked Questions about Open AT

**NOTE:** All reference manuals are provided in PDF format. The Adobe Acrobat Reader can be downloaded from Adobe's web site at <http://www.adobe.com>. The recommended version is Version 4.0 or higher.

## 2 Software installation

To develop and test Open AT applications you must install the Open AT SDK. This chapter guides you through the installation of the Open AT SDK.

### 2.1 System Requirements

To install the Open AT SDK, your system must support one of the following operating systems :

- Windows 95 / 98 / NT / Me / 2000

### 2.2 Hardware Requirements

The main requirements for the PC that will support the Open AT SDK are:

- Pentium 300 MHz or higher with at least 64 MB of RAM and 500 MB free on the hard disk
- A CD-ROM drive (for software installation)
- At least 2 free COM (serial) port for the communication with the target product

### 2.3 Software Requirements

- Microsoft Visual C++ Version 6.0
- ARM Compiler

There are two ways to develop an Open AT application:

- ① using the Open AT wizard ("Debug Mode"). This mode requires the Visual C++ environment.
- ② using the MS-DOS generation tools ("Target mode"). This mode does not require Visual C++.

---

**IMPORTANT:** The ARM compiler is included in the SDK as an option. The compiler must be compatible with the Open AT software version. In case the ARM compiler has not been ordered with the Open AT SDK, please check that your current version of the ARM compiler is compatible with the Wavecom core software<sup>1</sup>.

---

<sup>1</sup> For ex. if the Wavecom core software has been compiled with the ARM SDT 2.51 compiler, the Open AT application (embedded application) must be compiled with the same compiler version.

### 3 Installing the Open AT SDK

Insert the Open AT SDK CD-ROM in the drive on your PC. If the auto-start is enabled, the installation will begin automatically.

If the auto-start is disabled or for some reason the auto-installation does not start, you can use Windows Explorer to launch `\\SETUP\\DISK1\\SETUP.EXE` from the root folder of the CD-ROM.

After this, the following menu is displayed.



Figure 1 - Open AT startup screen

From this menu several operations are possible :

- ◆ Edit the Readme.txt file, describing the CD-ROM content.
- ◆ Install the Open AT SDK.
- ◆ Access the folder with all documents related to Open AT.
- ◆ Explore the CD-ROM contents.
- ◆ Exit the Open AT installation program.



To install the Open AT SDK choose **install Open AT**. The setup program will then run.

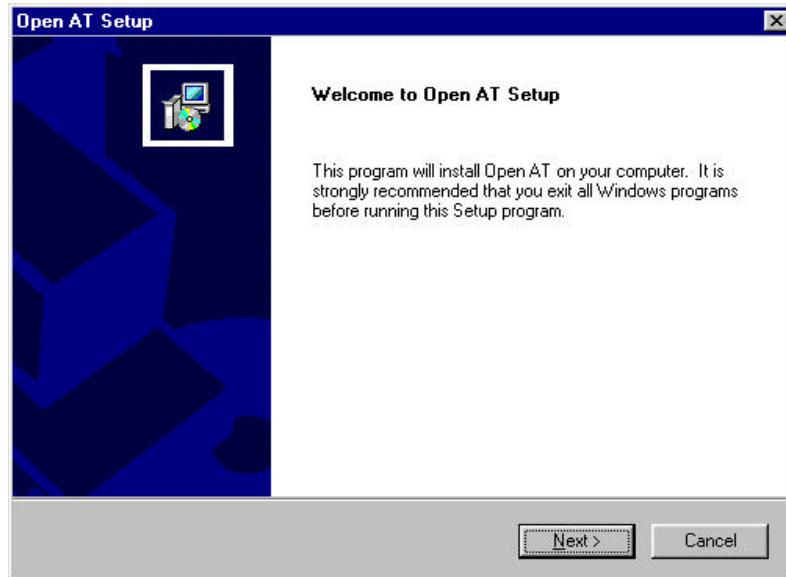


Figure 2 - Open AT setup

Select **Next** to continue

### 3.1 Setup options

Three components can be installed either together or separately. The first component is Open AT itself, with the development environment, the support files, the libraries and the documentation in PDF format. The second component is the Open AT reference applications. The third component is the compiler.

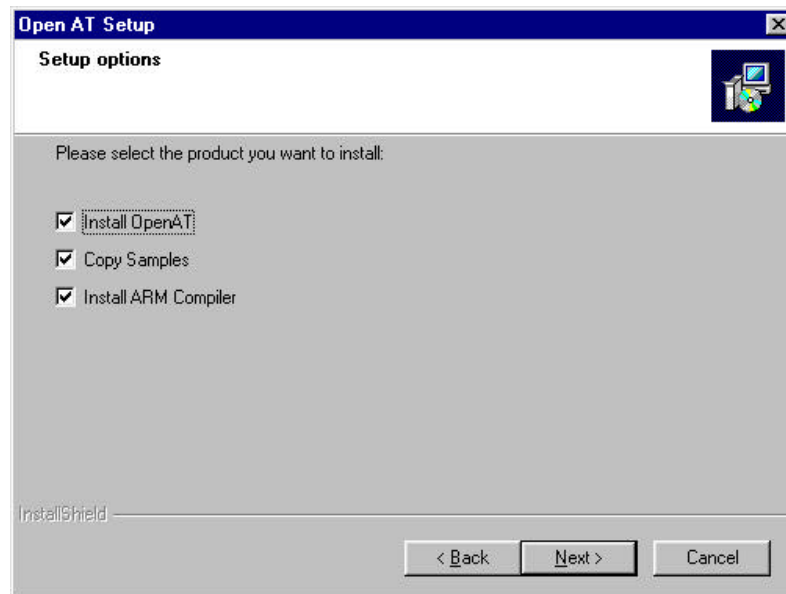


Figure 3 – Setup options

After the choose of setup options select **Next** to continue.

### 3.2 Destination of the Program and Documentation Files

The Open AT SDK can be installed in any directory on your hard disk.

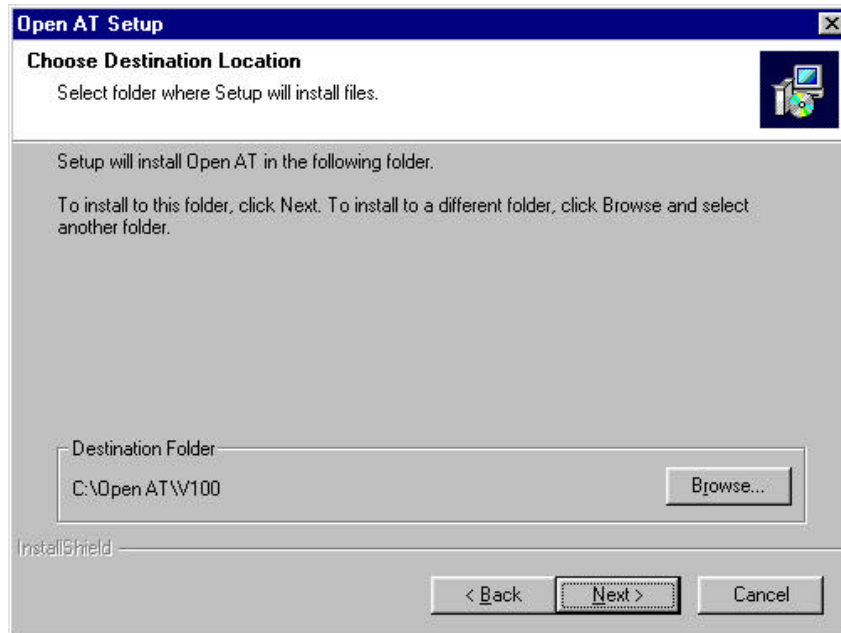


Figure 4 - Open AT Destination Folder

The default location, as shown in the example above, is in a folder named with the version number of the Open AT SDK. It is by default installed under the root folder of the **C:** drive. If this location is not suitable, enter a different path before clicking **Next**. The files will be copied under the destination folder that is specified.

### 3.3 File copy and system update

The setup program will now copy the Open AT SDK files on your hard drive.

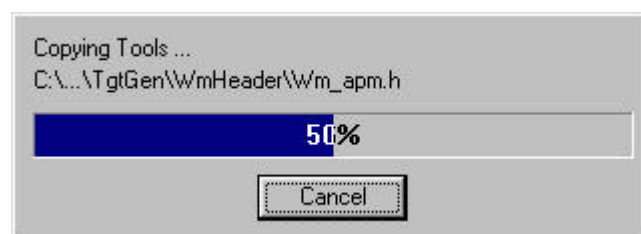


Figure 5 - Open AT SDK files copy

When the copy is done, the setup program updates your **"autoexec.bat"** file, creating a **"autoexec.000"** backup file with your previous configuration.



Figure 6 - "autoexec.bat" file update

### 3.4 Compiler

If you select the **"Install ARM compiler"** option (cf. §3.1), the setup program asks for the ARM Compiler CD-ROM.



Figure 7 - Insert the ARM Compiler Install CD

Insert this CD-ROM and press the **OK** button. Now the ARM Compiler Setup program will run. Please follow the indications displayed to complete this installation. Please **not restart your computer** when you are asked to, at the end of the compiler installation.

### 3.5 Wavecom Development Toolkit

If you did not select the **“Install ARM compiler”** option (cf. §3.1), at the end of the Open AT SDK setup program you will be asked to restart your computer. Please select the **“No”** option.

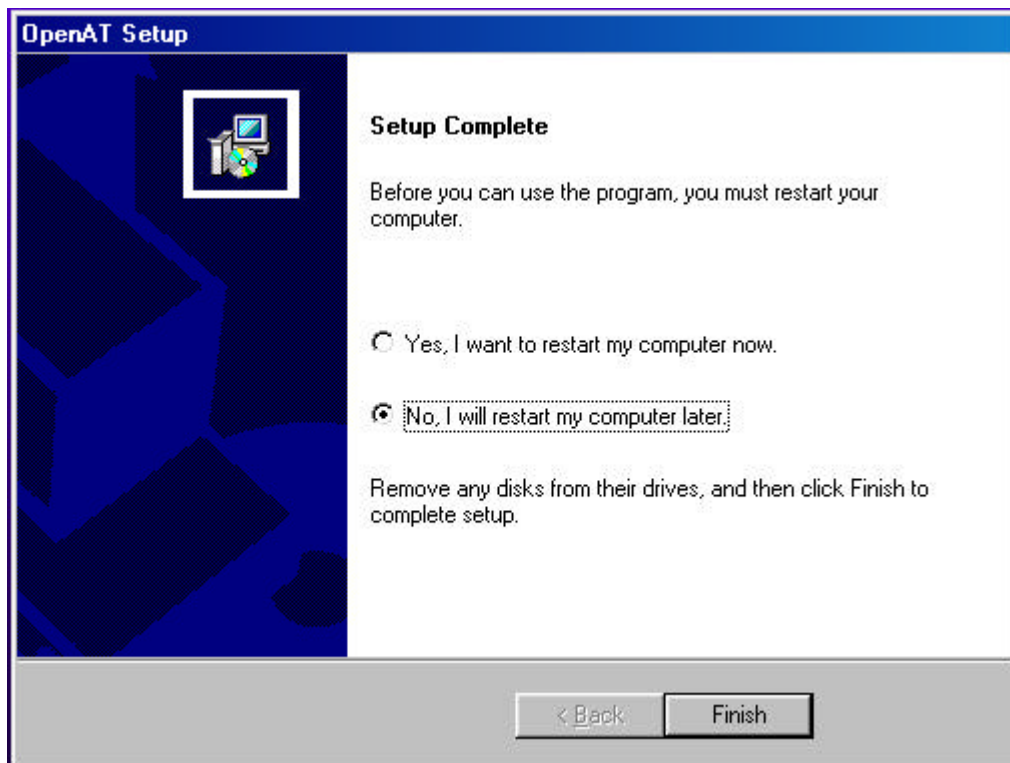


Figure 8 - Do not restart your computer

On the Open AT startup screen (cf. §3, figure 1), select the **“Install Wavecom Tools”** option. This starts the Wavecom Development Toolkit Setup program. Please follow the indications displayed to complete this installation.

At the end of the Setup program, please select the **“Yes”** option when you are asked to restart your computer, in order to update your configuration.

## 4 Support

Our goal is to provide you with professional assistance in the use of the Open AT software.

### 4.1 Contact Us

We are pleased to support you via e-mail, phone or fax. You can also get some support material from our web site.

Depending on your location, please contact:

For Europe / Middle East / Africa	For Asia Pacific	For Americas
<p>✉ : Wavecom SA Technical Support 12, Boulevard Garibaldi 92442 Issy Les Moulineaux FRANCE</p> <p>☎: + 33 (0)1 46 29 08 00 ☎: + 33 (0)1 46 29 56 70 ✉ : <a href="mailto:OpenAT-support@wavecom.com">OpenAT-support@wavecom.com</a></p>	<p>✉ : Wavecom Asia Pacific Ltd Technical Support 5/F, Shui On Centre 6/8 Harbour Road - Wan Chai HONG KONG - PRC</p> <p>☎: + 852 2824 0254 ☎: + 852 2824 0255 ✉ : <a href="mailto:OpenAT-support@wavecom.com">OpenAT-support@wavecom.com</a></p>	<p>✉ : Wavecom Inc Technical Support 610 West Ash Street, Suite 1400 SAN DIEGO, CA 92101 USA</p> <p>☎: + 1 619 235 9702 ☎: + 1 619 235 9844 ✉ : <a href="mailto:OpenAT-support@wavecom.com">OpenAT-support@wavecom.com</a></p>

### 4.2 World Wide Web

You can get general information and support material on Open AT at:

<http://www.wavecom.com>

Registered customers can access the Customer Support section to download the latest updates on Open AT.

As soon as available, you will also be able to access an Open AT dedicated section from the Wavecom web site. Through this, you will be able to get and share technical and marketing knowledge about Open AT.

## 5 Warranty

**Caution:**

**All products under warranty that are sent back to Wavecom for repair must be free of any embedded application.**

Wavecom will return all Open AT compatible products under warranty with the default factory configuration.



WAVECOM S.A. - 12, boulevard Garibaldi - 92442 Issy-les-Moulineaux Cedex - France - Tel: +33 (0)1 46 29 08 00 - Fax: +33 (0)1 46 29 08 08  
WAVECOM Inc. - 610 West Ash Street, Suite 1400 - San Diego, CA 92101 - USA - Tel: +1 619 235 9702 - Fax: +1 619 235 9844  
WAVECOM Asia Pacific Ltd. - 5/F, Shui On Centre - 6/8 Harbour Road - Hong Kong, PRC - Tel: +852 2824 0254 - Fax: +852 2824 0255

[www.wavecom.com](http://www.wavecom.com)