



Getting Started with Open AT[®] V4.10

Revision: 002
Date: September 2006



wavecom[®]
Make it wireless


Getting Started with Open AT[®] V4.10

Revision: **002**

Date: **September 25, 2006**

Reference: **WM_DEV_OAT_UGD_020**

Trademarks

®, WAVECOM®, WISMO®, Open AT® and certain other trademarks and logos appearing on this document, are filed or registered trademarks of Wavecom S.A. in France or in other countries. All other company and/or product names mentioned may be filed or registered trademarks of their respective owners.

Copyright

This manual is copyrighted by WAVECOM with all rights reserved. No part of this manual may be reproduced in any form without the prior written permission of WAVECOM.

No patent liability is assumed with respect to the use of the information contained herein.

Document History

Index	Date	Versions	
001	January 17, 2006	Creation	
002	August 2006	Update	

Table of Contents

1. Software installation	6
1.1. System Requirements	6
1.2. Hardware Requirements.....	6
1.3. Optional Software Requirements.....	6
2. Installing the Open AT[®] SDK.....	7
2.1. License agreement	9
2.2. Destination location for installation	10
2.3. Setup options.....	10
2.4. File copy and system update	12
2.5. Installed shortcuts in the Start Menu	12
3. Support.....	13
3.1. Contact Us	13
3.2. Online Support	13
3.3. Open AT [®] Developers Forum	13
3.4. Wavecom University.....	13
3.5. Open AT [®] Application Gallery	13
3.6. GCC compiler support	14
4. Warranty.....	14

List of Figures

Figure 1 – Open AT [®] startup screen	7
Figure 2 – Open AT [®] setup.....	8
Figure 3 – Click-wrap license agreement.....	9
Figure 4 – Open AT [®] Destination Folder	10
Figure 5 – Setup options.....	11
Figure 6 – Open AT [®] SDK files copy	12
Figure 7 – Setup is complete.....	12
Figure 8 – Open AT [®] shortcuts.....	12

1. Software installation

To develop and test Open AT® applications you must install the Open AT® SDK. This chapter guides you through the installation of the Open AT® SDK.

1.1. System Requirements

To install the Open AT® SDK, your system must support one of the following operating systems:

- Windows 98 / NT / Me / 2000 / XP

IMPORTANT WARNING: The provided GCC compiler runs only on Windows NT/2000/XP versions (it is not supported on Windows 98/ME systems).

1.2. Hardware Requirements

The main requirements for the PC that will support the Open AT® SDK are:

- Pentium 300 MHz or higher with at least 128 MB of RAM and 500 MB free on the hard disk
(Recommended: CPU speed 1GHz or higher, RAM: 256 MBytes or more)
- A CD-ROM drive (for software installation)
- At least 1 free COM (serial) port for the communication with the target product

1.3. Optional Software Requirements

If the user does not wish to use the supplied Eclipse IDE for Open AT, it can install one of the following Visual C++ versions on its system:

- Microsoft Visual C++ Version 6.0
or
- Microsoft Visual C++ .NET 2002 edition (7.0)
or
- Microsoft Visual C++ .NET 2003 edition (7.1)

If the user does not wish to use the supplied GCC compiler for the target mode, it can install and use an ARM Development Suite (ADS) 1.2 compatible tools suite on its system.

2. Installing the Open AT® SDK

Insert the Open AT® SDK CD-ROM in the drive on your PC. If the auto-start is enabled, the installation will automatically start.

If the auto-start is disabled or for some reason the auto-installation does not start, you can use Windows Explorer to launch `setup.exe` from the root folder of the CD-ROM.

After this, the following menu is displayed.



Figure 1 – Open AT® startup screen

Several operations are possible from this menu:

- Display the Readme.html file, which describes the CD-ROM contents.
- Install the Open AT® SDK.
- Explore the CD-ROM contents.
- Exit the Open AT® installation program.

To install the Open AT® SDK, choose **install Open AT®**. The setup program will then run.

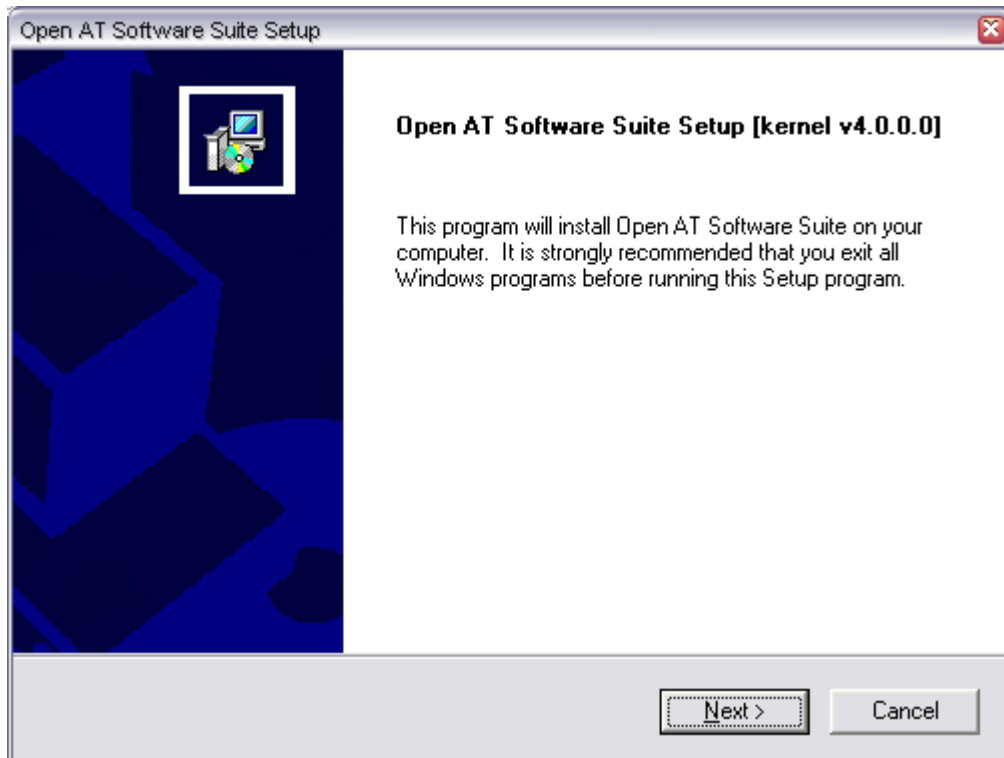


Figure 2 – Open AT® setup

Select **Next** to continue

2.1. License agreement

The Open AT® click-wrap license agreement is now displayed. You have to read & accept this license agreement (by selecting the **Yes** button) in order to continue running the Open AT® setup process.



Figure 3 – Click-wrap license agreement

2.2. Destination location for installation

The Open AT® Software Suite can be installed in any directory on your hard disk.

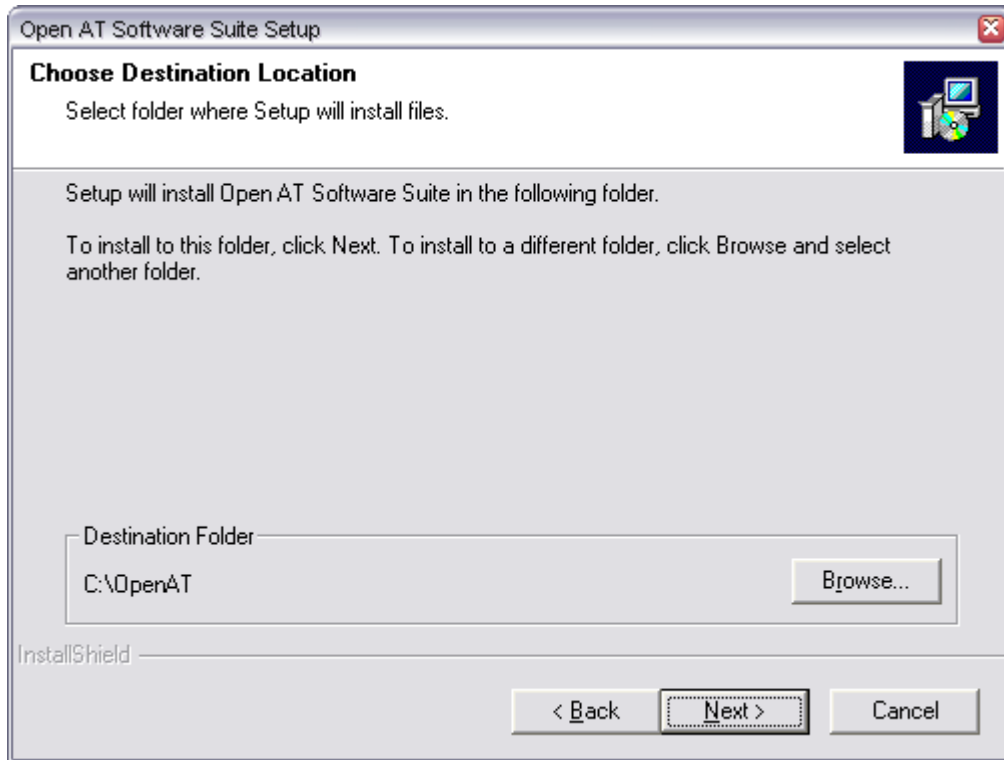


Figure 4 – Open AT® Destination Folder

The default location, as shown in the example above, is under the root folder of the **C:** drive.

If this location is not suitable, enter a different path before clicking **Next**. The Software Suite's components files will be copied under the specified destination folder. Component sub-versions are automatically processed by the Setup engine: the user only has to select a root location for the Open AT® Software Suite, whatever the installed version.

Caution : This path must not include any space character.

2.3. Setup options

The Open AT® Software Suite Setup allows each supplied component to be installed separately. After browsing for existing versions, the program will automatically check or not each component box, according to whether it is already installed or not on the system. Moreover, the total space required on the disk is calculated according to the user's choice.

Main components families are:

- Open AT® IDE: tools set usable to configure, develop, build and debug Open AT® applications

- Open AT® OS: the Open AT® API libraries, header, samples & documentation files.
- Open AT® Firmware: Wireless CPU base software and documentation
- Open AT® Plug-ins: additional functionalities packages.

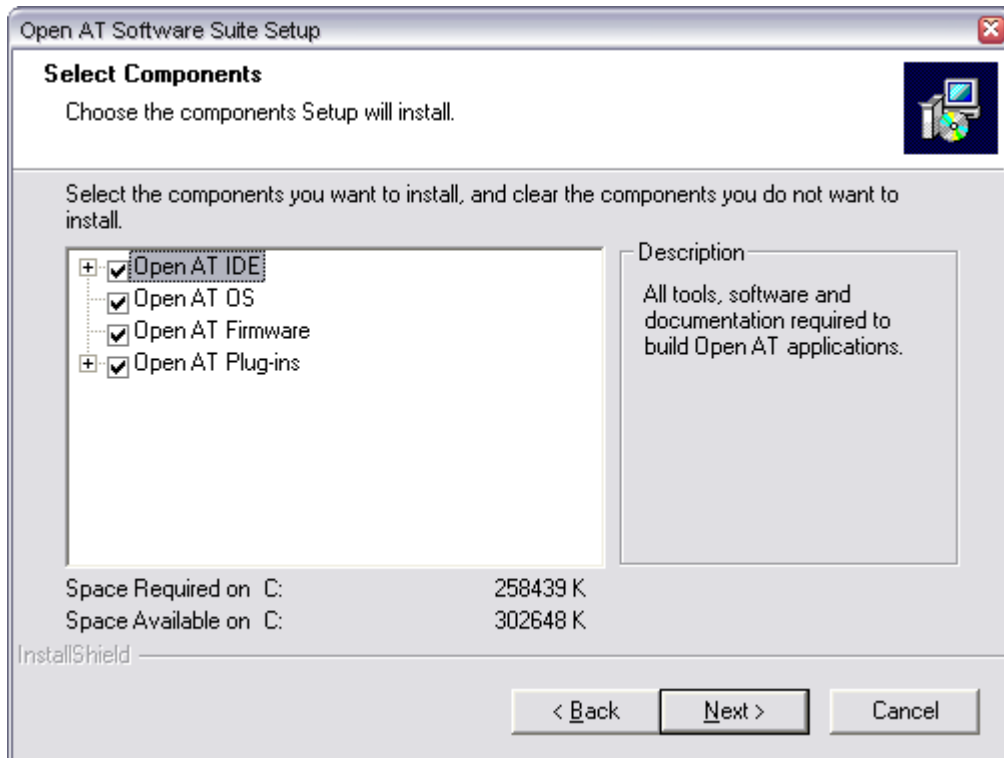


Figure 5 – Setup options

Note:

Some components (as the Java Runtime Environment, or the Wavecom Development Toolkit) are never automatically selected by the setup: the user has to select them itself in order to install the corresponding software. After the choice of the setup options, select **Next** to continue.

2.4. File copy and system update

The setup program will now copy the Open AT[®] SDK files to your hard drive.

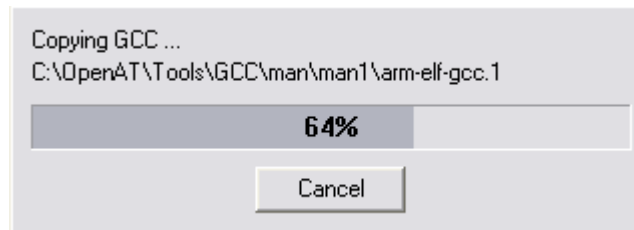


Figure 6 – Open AT[®] SDK files copy

When copy is complete, the setup program updates your system. Then, a message box will be displayed to inform the user that Setup is complete.

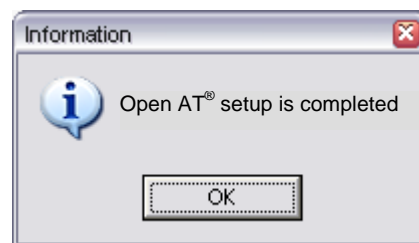


Figure 7 – Setup is complete

2.5. Installed shortcuts in the Start Menu

The Open AT[®] setup installs some shortcuts in the **Start\Wavecom** menu, for each selected component family for example, the Open AT[®] IDE shortcuts are displayed below:

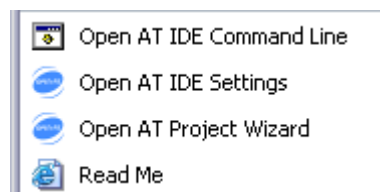


Figure 8 – Open AT[®] shortcuts

3. Support

Our goal is to provide you with professional assistance in the use of the Open AT[®] software.

3.1. Contact Us

For support, please contact your regular Wavecom contact.

3.2. Online Support

You can get general information and support material on Open AT[®] at:
<http://www.wavecom.com>

A range of application notes, some with comprehensive source code such as "Graphic Engine" or "Floating Point" libraries are also available in the product support section.

Registered customers will also have access to the Customer Support section to download the latest updates on Open AT[®].

3.3. Open AT[®] Developers Forum

As a developer of Open AT[®] Applications, you are invited to join the expanding community of developers in the dedicated online forum. Meet other developers and discuss openly any aspect of Open AT[®] Software whether it be Open AT[®] IDE, Open AT[®] OS, Open AT[®] Plug-Ins or Open AT[®] Applications. Join now at: www.wavecom.com/forum

3.4. Wavecom University

Whether you are new to Open AT[®] Software or a seasoned programmer, there is something for everyone in Wavecom University. Sign up for an Open AT[®] Course today and benefit from a 5 day intensive course, designed and conducted by professional trainers, with a strong emphasis on practical hands on programming. More information at: www.wavecom.com/university

3.5. Open AT[®] Application Gallery

Does your company have a commercially deployed product in your market that encompasses an Open AT[®] Application? Why not submit it to our online gallery and display it with pride to a global audience and potentially create additional demand for your product? Submissions can be made at: www.wavecom.com/gallery

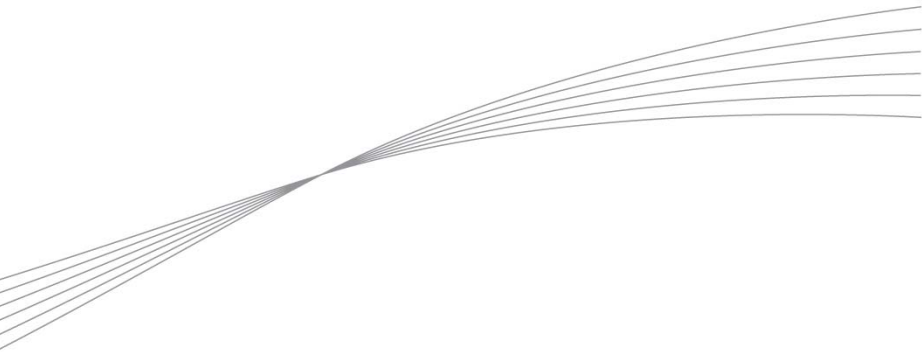
3.6. GCC compiler support

Wavecom does not offer any support on the GCC cross-compiler provided with the Open AT[®] SDK. To get assistance on this compiler, please refer to the <http://gcc.gnu.org> website.

4. Warranty

Caution: All products under warranty that are sent back to Wavecom for repair must be free of any embedded application.

Wavecom will return all Open AT[®] compatible products under warranty with the default factory configuration.



wavecom 

Make it wireless

WAVECOM S.A. - 3 esplanade du Foncet - 92442 Issy-les-Moulineaux Cedex - France - Tel: +33(0)1 46 29 08 00 - Fax: +33(0)1 46 29 08 08
Wavecom, Inc. - 4810 Eastgate Mall - Second Floor - San Diego, CA 92121 - USA - Tel: +1 858 362 0101 - Fax: +1 858 558 5485
WAVECOM Asia Pacific Ltd. - Unit 201-207, 2nd Floor, Bio-Informatics Centre - No.2 Science Park West Avenue - Hong Kong Science Park, Shatin
- New Territories, Hong Kong

www.wavecom.com