

RapidPLUS Installation Guide

RapidPLUS Installation Guide

© 2004 e-SIM Ltd. All rights reserved.

e-SIM Ltd.
POB 45002
Jerusalem
91450
Israel

Tel: 972-2-5870770
Fax: 972-2-5870773

Information in this manual is subject to change without notice and does not represent a commitment on the part of the vendor. The software described in this manual is furnished under a license agreement and may be used or copied only in accordance with the terms of that agreement. No part of this manual may be reproduced or transmitted in any form or by any means, electronic or mechanical, including photocopying and recording, for any purpose without the express written permission of e-SIM Ltd.

Windows is a registered trademark of Microsoft Corporation in the United States and other countries.

UNIX is a registered trademark of The Open Group.

Netscape Communicator is a registered trademark of Netscape Communications Corporation in the U.S. and other countries.

FLEXlm and LMTOOLS are trademarks or registered trademarks of Macrovision Corporation.

Other product and company names mentioned in this manual may be trademarks or registered trademarks of their respective owners.

Contents

RAPIDPLUS INSTALLATION GUIDE	1
Installing a Node-Locked License	2
Installing a Floating License (Windows-Based Server)	4
Installing RapidPLUS on Client Computers	4
Obtaining and Installing Floating License Files	5
Using the License Manager Daemon	7
Installing a Floating License (UNIX System Server)	11
Installing RapidPLUS on Client Computers	11
Obtaining and Installing Floating License Files	12
Using the License Manager Daemon	14
Merging FLEXlm Licenses	17
Updating the License Manager Daemon	18
Combining the License Files	18

RapidPLUS

Installation Guide

RapidPLUS is a comprehensive software package for the generation of simulations and prototypes of embedded systems.

This installation guide presents the following:

- Installation instructions for a single (node-locked) license.
- Installation instructions for a floating (network) license for a Windows-based server and for a UNIX system server.
- Instructions for merging more than one FLEXlm license on the server.

INSTALLING A NODE-LOCKED LICENSE

This section gives instructions for installing RapidPLUS on a single computer running on a Windows operating system, and for obtaining and installing a node-locked license. **You must have administrative privileges on your computer.**

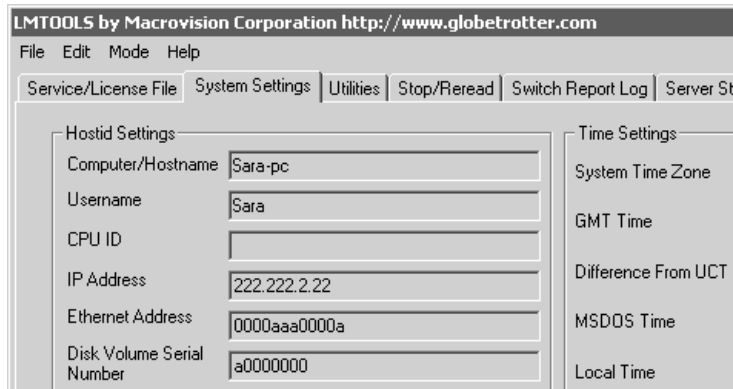
❖ *NOTE: To request an upgrade, see the procedure “To obtain and install your node-locked license file,” below.*

To install RapidPLUS on your computer:

- 1 From the RapidPLUS CD-ROM, run *Setup.exe*. Follow the on-screen prompts and when prompted, enter the installation code supplied on the back of the CD-ROM case.
- 2 Start RapidPLUS from the desktop shortcut. It will be in evaluation mode until you add the license file. To obtain the license file, see the following procedure.
- 3 Be sure to read *Readme.wri*. It contains tips, new-feature overviews, and documentation notes.

To obtain and install your node-locked license file:

- 1 Run *lmtools.exe*, located in the RapidPLUS FLEXlm folder (by default, Rapidxx\FLEXlm). The LMTOOLS dialog box opens.
- 2 Click the **System Settings** tab:



- 3 Copy the following Hostid settings, which you will need for step 5:
 - Computer/Hostname.
 - Ethernet address.
 - Disk volume serial number.
- 4 Close the LMTOOLS dialog box.
- 5 Send an e-mail message to the e-SIM Orders Department (see the contact information below) with the following information:
 - The three items from step 3.
 - Your company's name and contact information.
 - **For a new license:** the purchase order number for RapidPLUS.

For an upgrade: details from the previous license.
 - For HASP, locate the number on the HASP dongle. You can also see the license number by choosing Help|About Rapid.
 - For FLEXlm, locate the license number in *license.dat*.

Contacting e-SIM by e-mail

Orders Department: orders@e-sim.com

Address questions and problems to e-SIM Customer Support:

International address: support@e-sim.com

United States and Canada: us_support@e-sim.com

Japan: support_jp@e-sim.co.jp

The e-SIM Orders Department will generate your license file and send it to you by a return e-mail message. The license file is named *license.dat*.

- 6 Copy the license file, *license.dat*, to the RapidPLUS FLEXlm folder (by default, Rapidxx\FLEXlm).
- 7 Start RapidPLUS from the desktop shortcut to verify that the evaluation mode alert no longer appears.

Installation is complete!

INSTALLING A FLOATING LICENSE (WINDOWS-BASED SERVER)

The installation of floating (network) licenses should be handled by the system administrator.

This section gives instructions for:

- Installing RapidPLUS on client computers.
 - Obtaining and installing floating license files.
 - Configuring and starting the license manager daemon.
- ❖ *NOTE: To request an upgrade, see “Obtaining and Installing Floating License Files” on p. 5.*

Installing RapidPLUS on Client Computers

You can install RapidPLUS on client computers running on a Windows operating system. **You must have administrative privileges on each client computer.**

To install RapidPLUS on client computers:

- 1 On each client computer**, run *Setup.exe* from the RapidPLUS CD-ROM. Follow the on-screen prompts and when prompted, enter the installation code supplied on the back of the CD-ROM case.
- 2** Start RapidPLUS from the desktop shortcut. It will be in evaluation mode until you add the floating license file. To obtain the license file, see the following section.
- 3** Be sure to read *Readme.wri*. It contains tips, new-feature overviews, and documentation notes.

Obtaining and Installing Floating License Files

In order to obtain a floating license, you install the FLEXlm utility on your Windows-based server, and send server information to the e-SIM Orders Department. **You must have administrative privileges.**

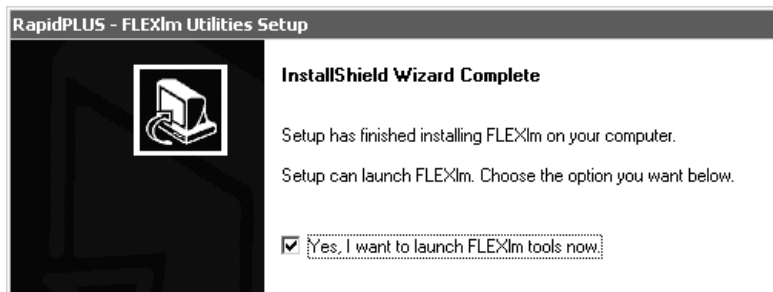
To obtain and install your floating license files:

- 1 **On the server computer**, run the FLEXlm setup file, *Setup.exe*, located on the RapidPLUS CD-ROM in the Util\FLEXlm\Lic_Mngr\Windows folder.

By default, the RapidPLUS-FLEXlm setup creates the folder Program Files\e-SIM\FLEXlm with the following contents:

- *esim.exe*
- *installs.exe*
- *license.dat*
- *lmgrd.exe*
- *lmtools.exe*
- *lmutil.exe*

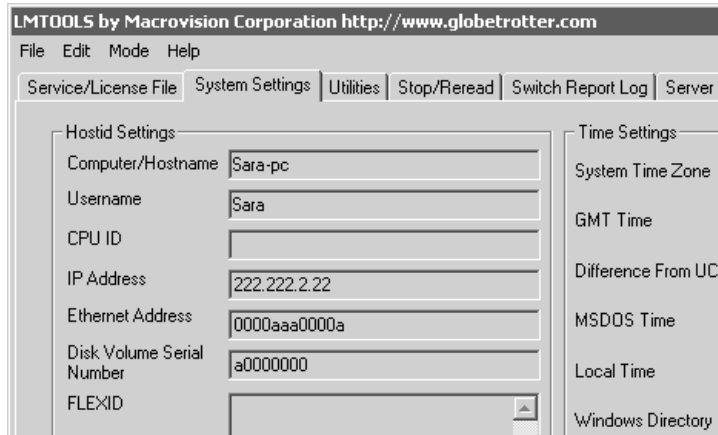
- 2 When the RapidPLUS-FLEXlm setup is complete, select the check box to launch FLEXlm tools.



The LMTOOLS dialog box opens.

- ❖ **NOTE:** If you want to open the FLEXlm utility at a later time, from the Windows Start menu, choose Programs|RapidPLUS-FLEXlm Utilities\FLEXlm Tools.

- 3 Click the **System Settings** tab.



- 4 Copy the following Hostid settings, which you will need for step 6:
 - Computer/Hostname.
 - Ethernet address.
 - Disk volume serial number.
- 5 Close the LMTOOLS dialog box.
- 6 Send an e-mail message to the e-SIM Orders Department (see the contact information on the following page) with the following information:
 - The three items from step 3.
 - Your company's name and contact information.
 - **For a new license:** the purchase order number for RapidPLUS.

For an upgrade: details from the previous license.

 - For NetHASP, locate the number on the HASP dongle. You can also see the license number by choosing Help|About Rapid.
 - For FLEXIm, locate the license number in *license.dat*.
 - RapidPLUS type and number of users.

Contacting e-SIM by e-mail

Orders Department: orders@e-sim.com

Address questions and problems to e-SIM Customer Support:

International address: support@e-sim.com

United States and Canada: us_support@e-sim.com

Japan: support_jp@e-sim.co.jp

The e-SIM Orders Department will generate your license files and send them to you by return e-mail. The license files are named *license.dat* and *license.server*.

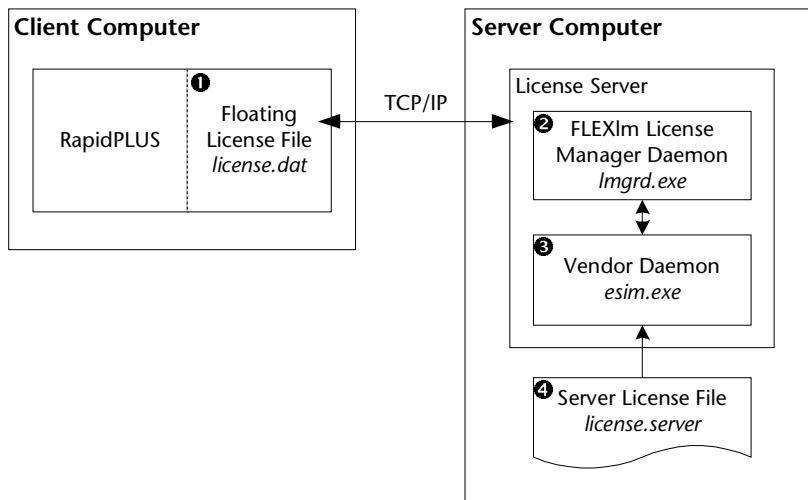
- 7 On each client computer**, copy the floating license file, *license.dat*, to the RapidPLUS FLEXlm folder (by default, Rapidxx\FLEXlm).
- 8 On the server computer**, copy the server license file, *license.server*, to the e-SIM\FLEXlm folder, then rename *license.server* to "*license.dat*".

Using the License Manager Daemon on the Server

When you run RapidPLUS on networked client computers, you will use the FLEXlm license manager on the server computer to handle the floating (network) license. The license management requires the following four components:

- 1** RapidPLUS with a floating license file, *license.dat*, received from the e-SIM Orders Department (residing on the client computer).
- 2** The license manager daemon, *lmgrd.exe*.
- 3** The vendor daemon, *esim.exe*.
- 4** The server license file, *license.server* (renamed *license.dat*), received from the e-SIM Orders Department (residing on the server computer).

The following diagram shows how these components work together:



The following section describes how to configure these components and start the license manager daemon.

Starting the License Manager Daemon

From the server computer, you can use the FLEXIm utility to start the license manager daemon, check its setup, and stop and restart the daemon, if necessary.

To start the license manager daemon:

- 1 Open the LMTOOLS dialog box: from the Windows Start menu, choose Programs|RapidPLUS-FLEXIm Utilities|FLEXIm Tools.
- 2 On the **Service/License File** tabbed page, be sure the option "Configuration using Services" is selected.

3 Click the **Config Services** tab; the following page is displayed:

If necessary, fill in or update the following information:

- “Service Name”: Use the default name, or change the name as needed.
 - “Path to the lmgrd.exe file” and “Path to the license file”: The default path and file names appear. If you changed the default program folder during installation, browse to the new folder or type the new path.
- ❖ *NOTE: The file lmgrd.exe must be in the same folder as esim.exe.*

4 Click the **Save Service** button.

5 Click the **Start/Stop/Reread** tab, and click the **Start Server** button. Then close the dialog box.

The license manager daemon is started and you can now run RapidPLUS on the client computers.

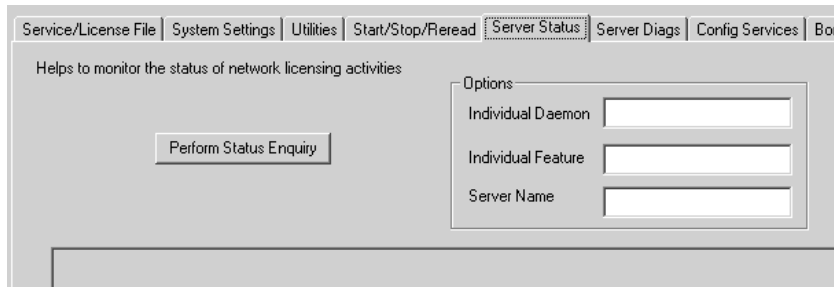
Checking the Setup

You can check the setup a few minutes after starting the license manager daemon.

To ensure that the license manager daemon setup is correct:

- 1 Open the LMTOOLS dialog box: from the Windows Start menu, choose Programs|RapidPLUS-FLEXlm Utilities|FLEXlm Tools.

- 2 Click the **Server Status** tab; the following page is displayed:



- 3 Click the **Perform Status Enquiry** button; the server status information is displayed.

Stopping and Restarting the License Manager Daemon

Whenever you receive a RapidPLUS upgrade, it is advisable to stop and then restart the license manager daemon.

To stop the license manager daemon:

- 1 Open the LMTOOLS dialog box: from the Windows Start menu, choose Programs|RapidPLUS-FLEXIm Utilities|FLEXIm Tools.
- 2 On the **Service/License File** tabbed page, be sure the option "Configuration using Services" is selected.
- 3 Click the **Start/Stop/Reread** tab, and click the **Stop Server** button. Then close the dialog box.

To restart the license manager daemon:

- 1 Open the LMTOOLS dialog box.
- 2 On the **Service/License File** tabbed page, be sure the option "Configuration using Services" is selected.
- 3 Click the **Start/Stop/Reread** tab, and click the **Start Server** button. Then close the dialog box.

INSTALLING A FLOATING LICENSE (UNIX SYSTEM SERVER)

The installation of floating (network) licenses should be handled by the system administrator.

This section gives instructions for:

- Installing RapidPLUS on client computers.
- Obtaining and installing floating license files.
- Configuring and starting the license manager daemon.

❖ *NOTE: To request an upgrade, see “Obtaining and Installing Floating License Files” on p. 12.*

Installing RapidPLUS on Client Computers

You can install RapidPLUS on client computers running on a Windows operating system. **You must have administrative privileges on each client computer.**

To install RapidPLUS on client computers:

- 1 On each client computer,** run *Setup.exe* from the RapidPLUS CD-ROM. Follow the on-screen prompts and when prompted, enter the installation code supplied on the back of the CD-ROM case.
- 2 Start RapidPLUS** from the desktop shortcut. It will be in evaluation mode until you add the floating license file. To obtain the license file, see the following section.
- 3 Be sure to read *Readme.wri*.** It contains tips, new-feature overviews, and documentation notes.

Obtaining and Installing Floating License Files

In order to obtain a floating license, you install the FLEXlm utility on your UNIX system server, and send server information to the e-SIM Orders Department. **You must have root-user privileges.**

❖ *NOTE: Directory and file names are case sensitive in a UNIX system.*

To install the FLEXlm utility:

- 1 On the server computer**, log in as a user with root permissions (i.e., a super-user).
- 2 Create a subdirectory**, called `flexlm`, preferably in the directory where users have their directories, for example:

```
/home/flexlm
```

- 3 From the RapidPLUS CD-ROM**, copy the file `sparc.zip`, located in `Util/FLEXlm/Lic_Mngr/unix/solaris/sparc`, to the `flexlm` directory.
- 4 At the command prompt**, type:

```
unzip sparc.zip
```

This command unzips four files:

- `lmgrd`
- `esim`
- `lmutil`
- `S81esim_lmgrd`

- 5 For the three files `lmgrd`, `lmutil`, and `esim`**; set the permissions to:

```
rwxr--r-- (execute permissions)
```

These files do not require root permissions.

❖ *NOTE: The file, `S81esim_lmgrd`, will be used later when you install the floating license.*

To obtain and install your floating license files:

- 1 Retrieve the **hostid** and **full qualified domain name** (FQDN) of the system.

To retrieve the hostid and FQDN, at the command line type:

```
hostid
```

- 2 Send the following items via e-mail to **e-SIM Orders Department** (see the contact information below):

- The hostid and FQDN (retrieved in step 1).
- Your company's name and contact information.
- **For a new license:** the purchase order number for RapidPLUS.

For an upgrade: details from the previous license.

- For NetHASP, locate the number on the HASP dongle. You can also see the license number by choosing Help|About Rapid.
- For FLEXlm, locate the license number in *license.dat*.
- RapidPLUS type and number of users.

Contacting e-SIM by e-mail

Orders Department: orders@e-sim.com

Address questions and problems to e-SIM Customer Support:

International address: support@e-sim.com

United States and Canada: us_support@e-sim.com

Japan: support_jp@e-sim.co.jp

The e-SIM Orders Department will generate your license files and send them to you by return e-mail. The license files are named *license.dat* and *license.server*.

- 3 **On each client computer**, copy the floating license file, *license.dat*, to the RapidPLUS FLEXlm folder (by default, Rapidxx\FLEXlm).
- 4 **On the server computer**, copy the server license file, *license.server*, to the flexlm directory.

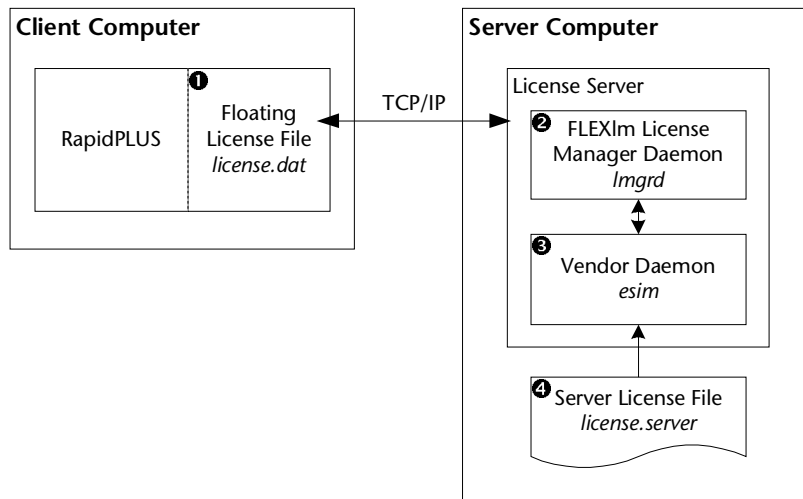
Rename *license.server* to "*license.dat*".

Using the License Manager Daemon on the Server

When you run RapidPLUS on networked client computers, you will use the FLEXlm license manager on the server computer to handle the floating (network) license. The license management requires the following four components:

- ❶ RapidPLUS with a floating license file, *license.dat*, received from the e-SIM Orders Department (residing on the client computer).
- ❷ The license manager daemon, *lmgrd*.
- ❸ The vendor daemon, *esim*.
- ❹ The server license file, *license.server* (renamed *license.dat*), received from the e-SIM Orders Department (residing on the server computer).

The following diagram shows how these components work together:



The following section describes how to configure these components and start the license manager daemon.

Starting the License Manager Daemon

From the server computer, you can use the FLEXlm utility to start the license manager daemon, check its setup, and stop and restart the daemon, if necessary.

To start the license manager daemon automatically as the system starts:

- 1 Copy the file, *S81esim_lmgrd*, from the flexlm directory to the /etc/rc3.d directory. This file contains the following code:

```
#!/sbin/sh
#
# start the lmgrd license server for flexlm
#ident"@(#)init.lmgrd1.1597/12/08 SMI"

case "$1" in
'start')
  if [ -f /home/flexlm/lmgrd ]; then
    /home/flexlm/lmgrd -c /home/flexlm/license.dat
  fi

  ;;

'stop')
  /usr/bin/pkill -9 -x -u 0 'lmgrd'
  ;;

*)
  echo "Usage: $0 { start | stop }"
  exit 1
  ;;
esac
exit 0
```

If your path is different from the default path (/home/flexlm), edit this file accordingly.

- 2 Set the file's permissions to:

```
rwxr--r-- (execute permissions).
```

This script will be run in runlevel 3 when the system boots.

To start the license manager daemon manually:

- At the command prompt, type:

```
/home/flexlm/lmgrd -c /home/flexlm/license.dat
```

❖ *NOTE: If you do not want to use the file, S81esim_lmgrd, just place the line in a boot script. This will start the server automatically as the system boots. For example, you can place the line in either of these files: /etc/rc.boot or /etc/rc.local.*

Checking the Setup

You can check the setup a few minutes after starting the license manager daemon.

To ensure that the license manager daemon setup is correct:

- At the command prompt, type:

```
/home/flexlm/lmutil lmdiag -c /home/flexlm/license.dat
```

❖ *NOTE: The command `lmutil lmdiag` is used as a diagnostic tool to verify that the server is running and serving licenses.*

Stopping and Restarting the License Manager Daemon

Whenever you receive a RapidPLUS upgrade, it is advisable to stop and then restart the license manager daemon.

To stop the license manager daemon:

- At the command prompt, type:

```
/home/flexlm/lmutil lmdown -c /home/flexlm/license.dat
```

To start the license manager daemon:

- At the command prompt, type:

```
/home/flexlm/lmgrd -c /home/flexlm/license.dat
```

MERGING FLEXLM LICENSES

If you are already running a FLEXlm-licensed product on a single server computer, you can merge the e-SIM license file, *license.server*, with an existing license file. Merged licenses can prevent licensing conflicts.

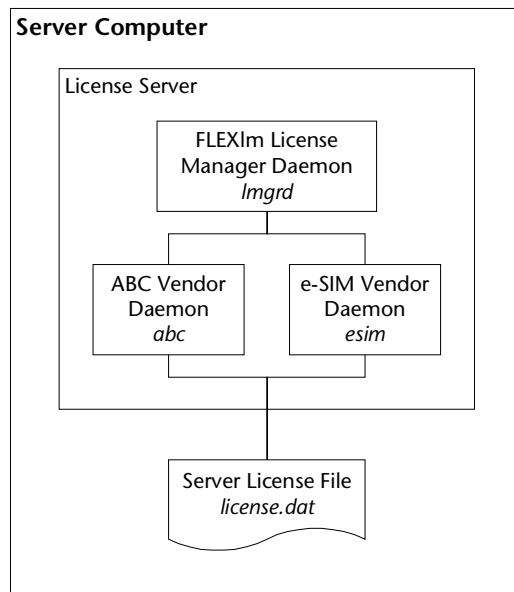
The following criteria are required to successfully merge FLEXlm licenses:

- The *lmgrd* file must be version 9.2 or higher. If the existing file is a lower version, you must replace it with the one supplied on the RapidPLUS CD-ROM (see instructions below).

The *lmgrd* file is backward compatible and the new version will work with your existing software (i.e., the existing clients who use the license server).

- The number of SERVER lines in the existing license file must be the same as in the license file that you received from the e-SIM Orders Department.
- The server name and hostid in the SERVER lines must be *exactly* the same as in the license file that you received from the e-SIM Orders Department.

The multiple vendor daemons will use the same license manager daemon and the same license file, as shown in the following illustration:



Updating the License Manager Daemon

If the existing license manager daemon is not version 9.2 or higher, you will need to replace it with the one supplied on the RapidPLUS CD-ROM.

To update the license manager daemon:

For instructions on how to stop and restart the FLEXlm license manager daemon, see p. 10 for Windows or p. 16 for UNIX.

- 1 Stop the FLEXlm license manager daemon.
- 2 Locate the existing (older) *lmgrd* file and replace it with the newer version from the RapidPLUS CD-ROM.
- 3 Restart the license manager daemon.

Combining the License Files

When you merge license files, the new merged file, *license.dat*, should be in the same directory as the license manager daemon, *lmgrd*.

Likewise, the e-SIM vendor daemon, *esim*, should be in the same location as *lmgrd*. If the *esim* file is not in the same location, a relative path must be specified in the license file (see example).

To merge the license files:

- 1 **Windows:** Copy the e-SIM vendor daemon file, *esim.exe*, from the server's RapidPLUS FLEXlm folder (by default Program Files\e-SIM\FLEXlm) to the folder with the license manager daemon, *lmgrd.exe*.
UNIX: Copy the e-SIM vendor daemon file, *esim*, from the server's RapidPLUS FLEXlm directory (by default /home/flexlm) to the directory with the license manager daemon, *lmgrd*.
- 2 Open the *license.server* file that you received from the e-SIM Orders Department and copy the lines that begin with **VENDOR** and with **FEATURE**.
- 3 Paste the lines in the existing *license.dat* file under the line that starts with the word **SERVER**.

Example of combined server license file

In the following sample of a merged *license.dat* file, the content from the e-SIM *license.server* file is in **bold**.

```
SERVER AAA_server12345bc12345
```

```
DAEMON abc /aaa/bbb/ccc/abc
```

```
FEATURE abc1...
```

```
FEATURE abc2...
```

```
FEATURE abc3...
```

```
VENDOR esim
```

```
FEATURE CODE esim 8.0...
```

```
FEATURE Commercial esim 8.0...
```

❖ *NOTE: If the e-SIM vendor daemon is not in the same location as the license manager daemon, then you must include the relative path in the merged license file. For example:*

```
VENDOR esim /local/adm/flexlm/rapid/esim
```

